

Le rôle et le statut de l'acier dans le projet du nouvel Hôtel de Ville de Montigny le Tilleul

Architecture conception	V+
Architecture exécution	Bureau Bouwtechniek
Structure	Bureau d'étude Greisch







GEORGE
CLOONEY
in ALFONSO CUARÓN
GRAVITY
0.4.13

WARNER BROS.







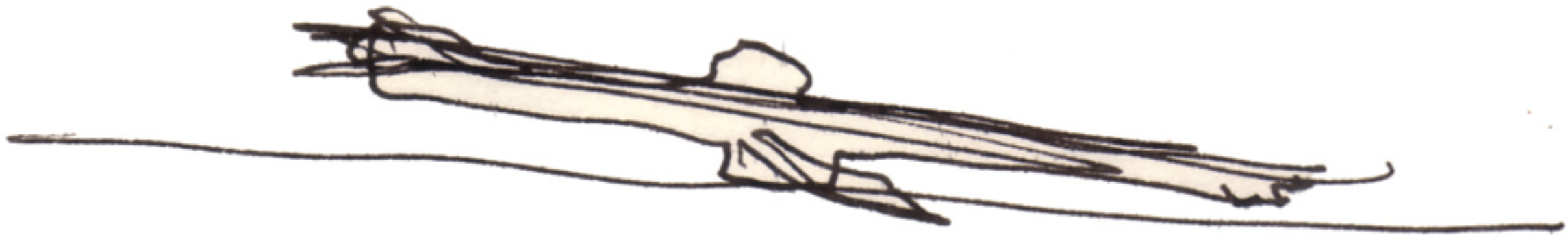
Police

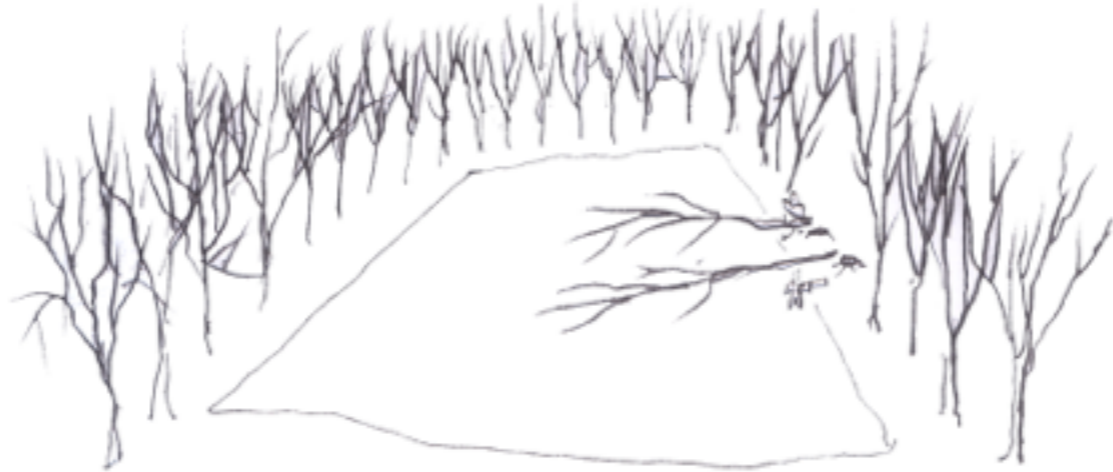
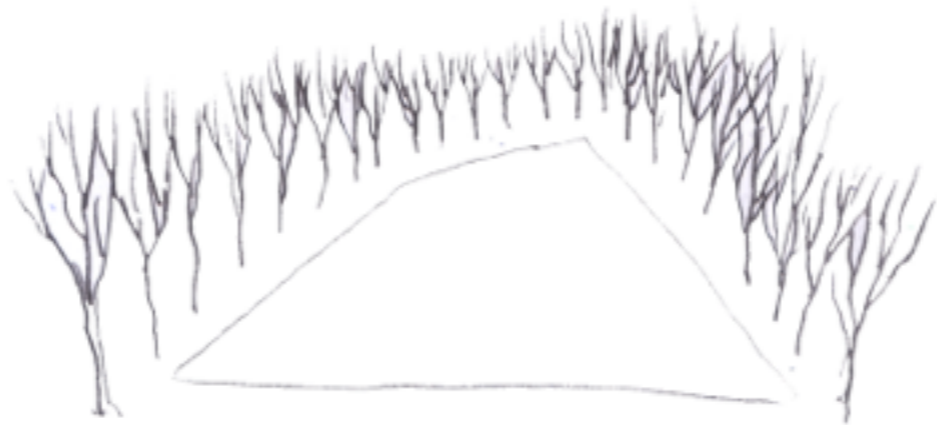


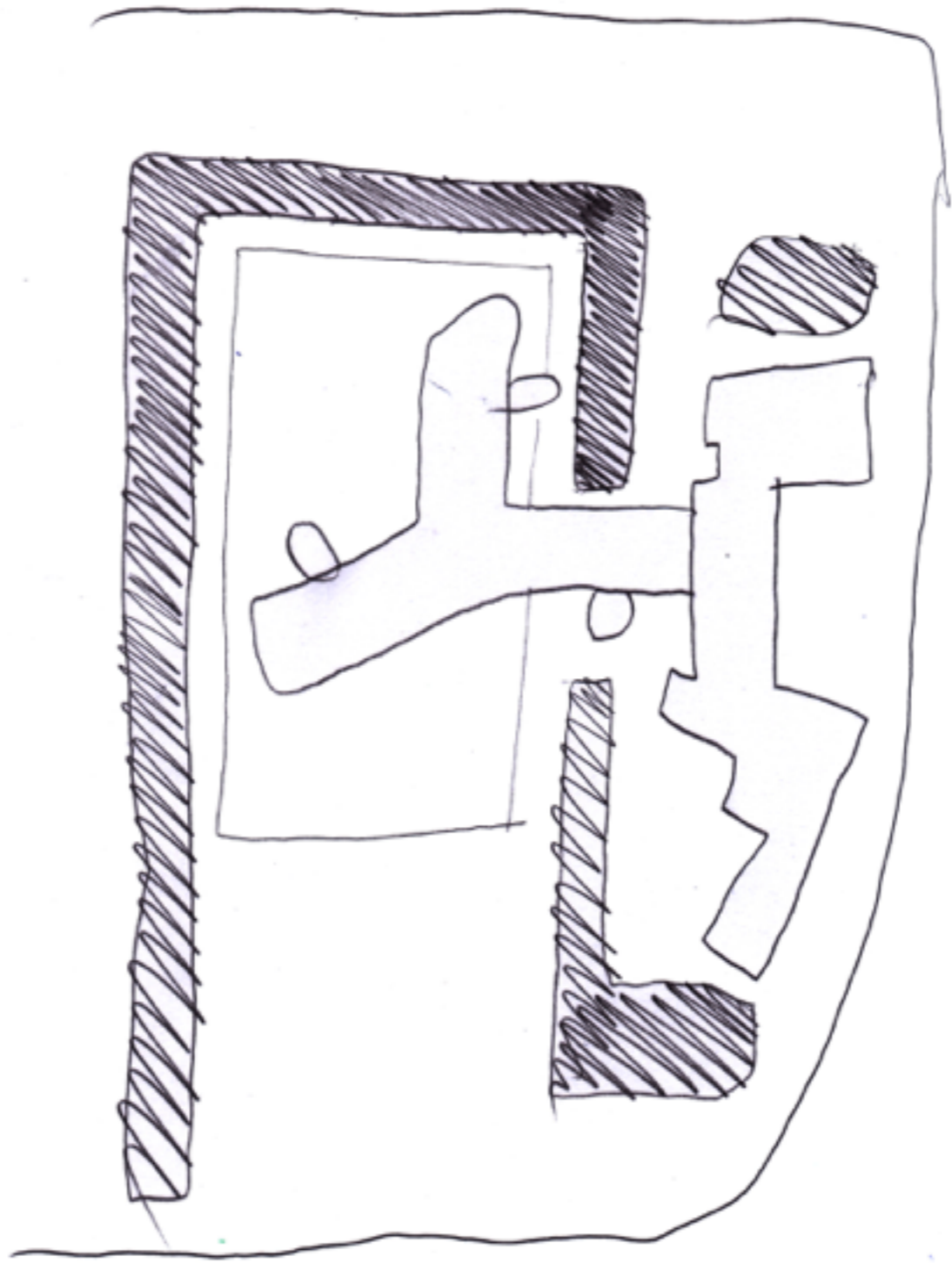


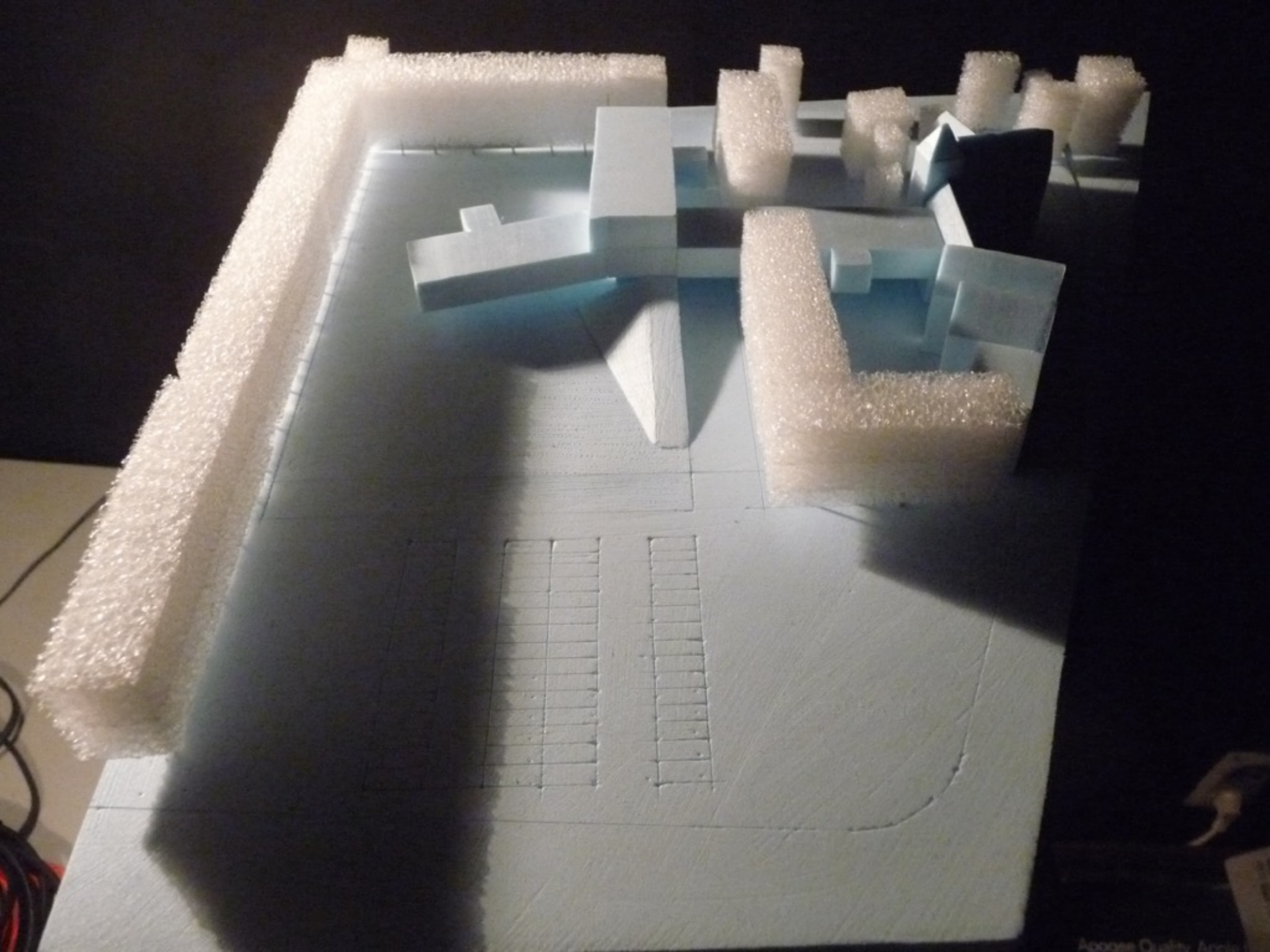
Pin It























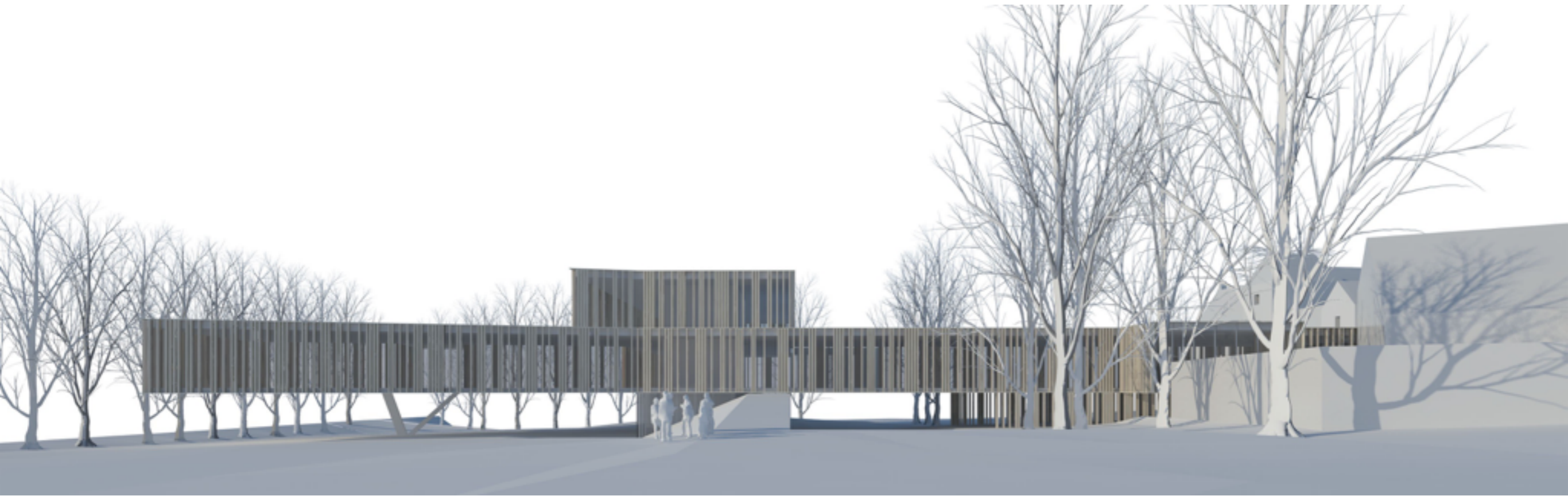


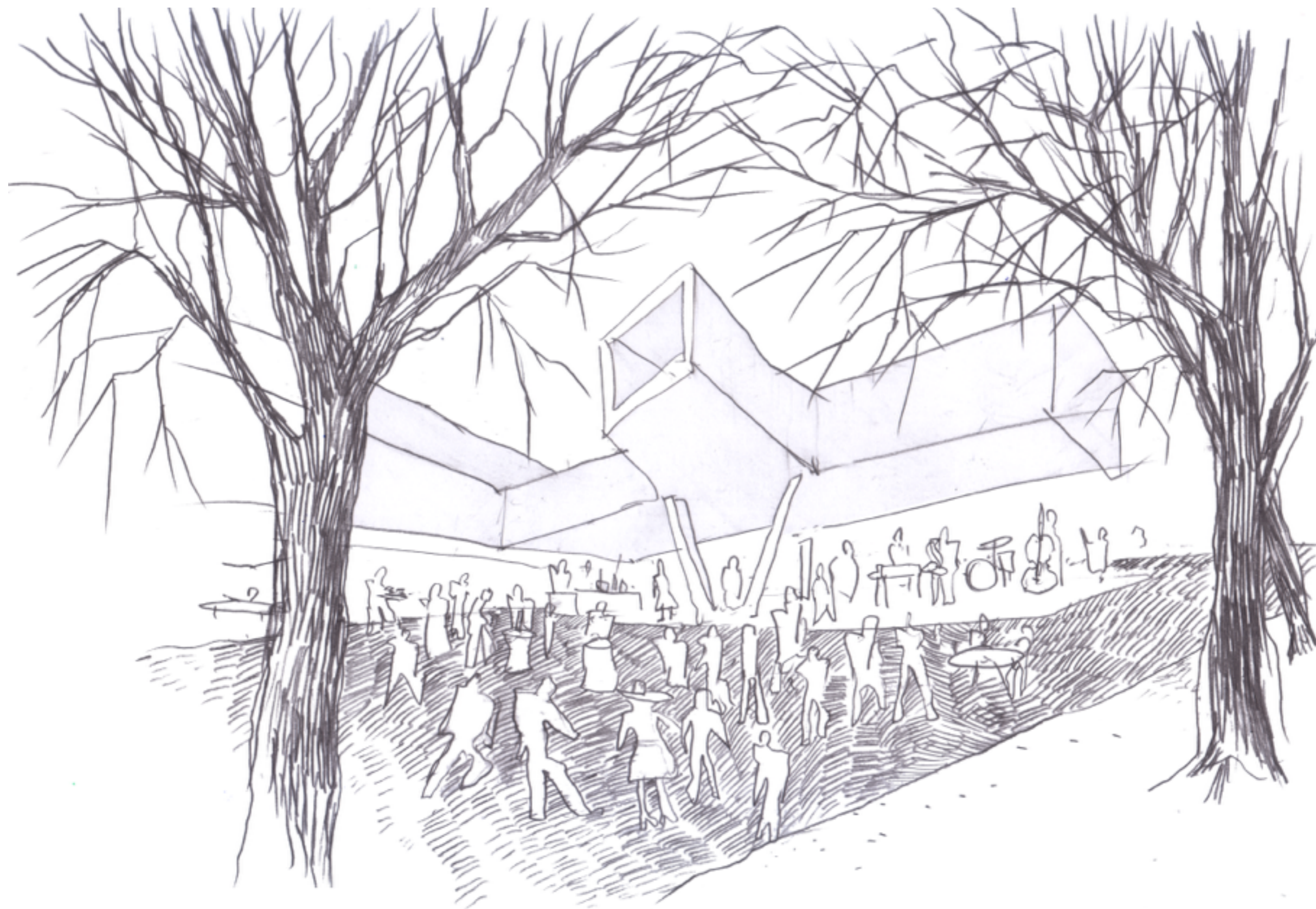


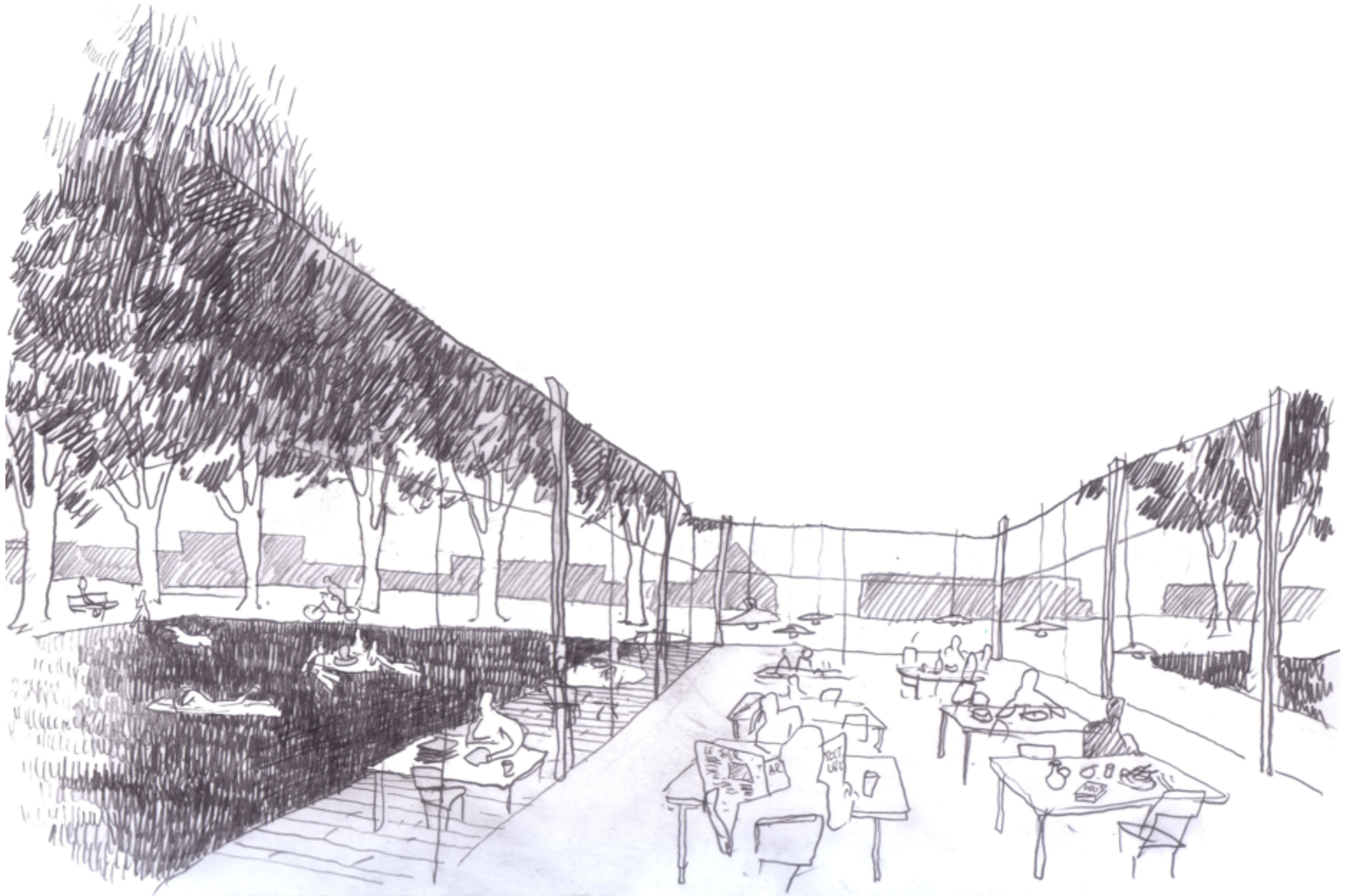


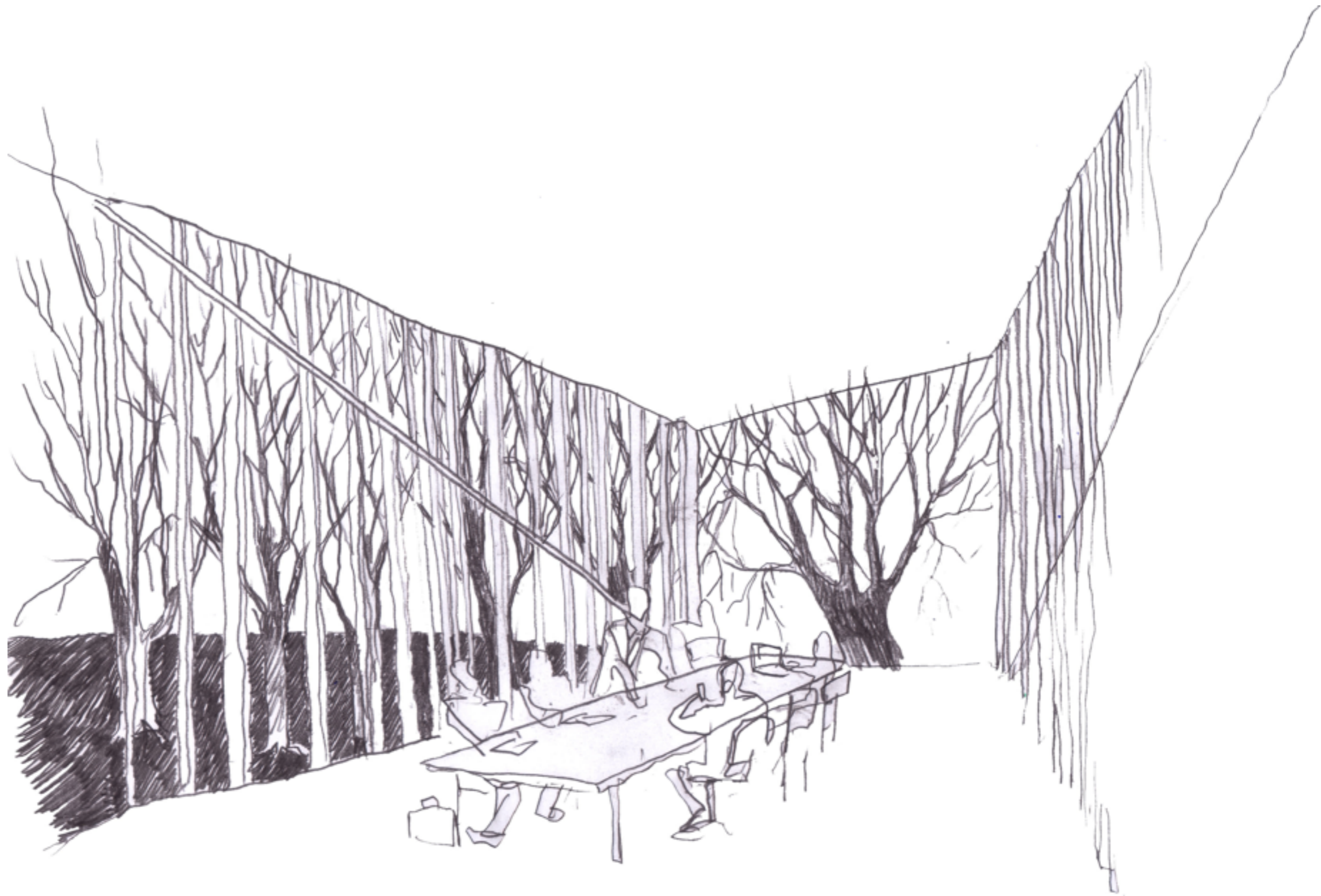


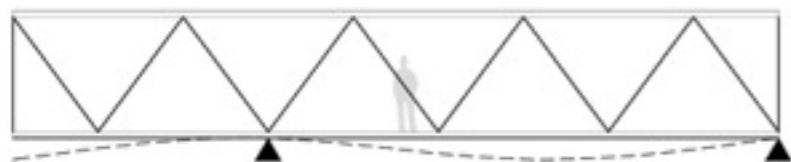
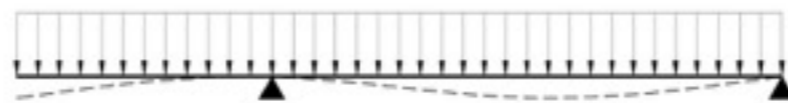




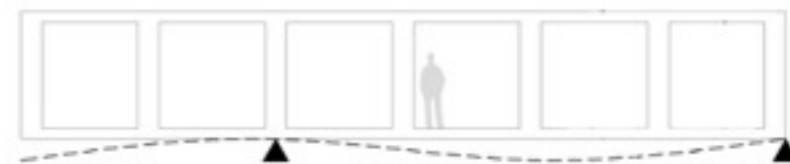




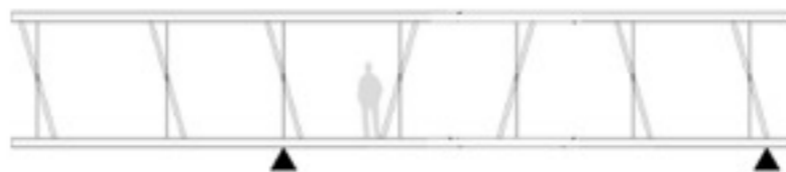




POUTRE TREILLIS
+ raideur
+ finesse
- transparence



POUTRE VIERENDEEL
- raideur
- finesse
+ transparence



POUTRE «MONTIGNY»
+ raideur
+ finesse
+ transparence















Merci
Dank u